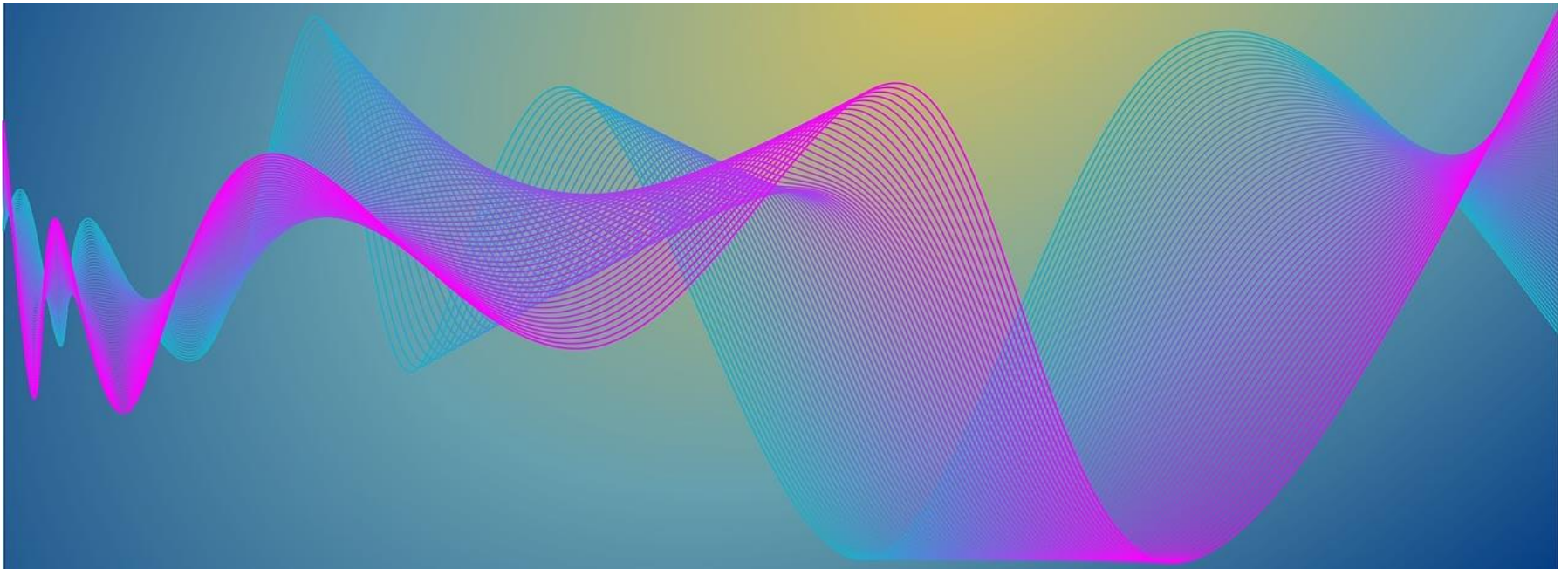
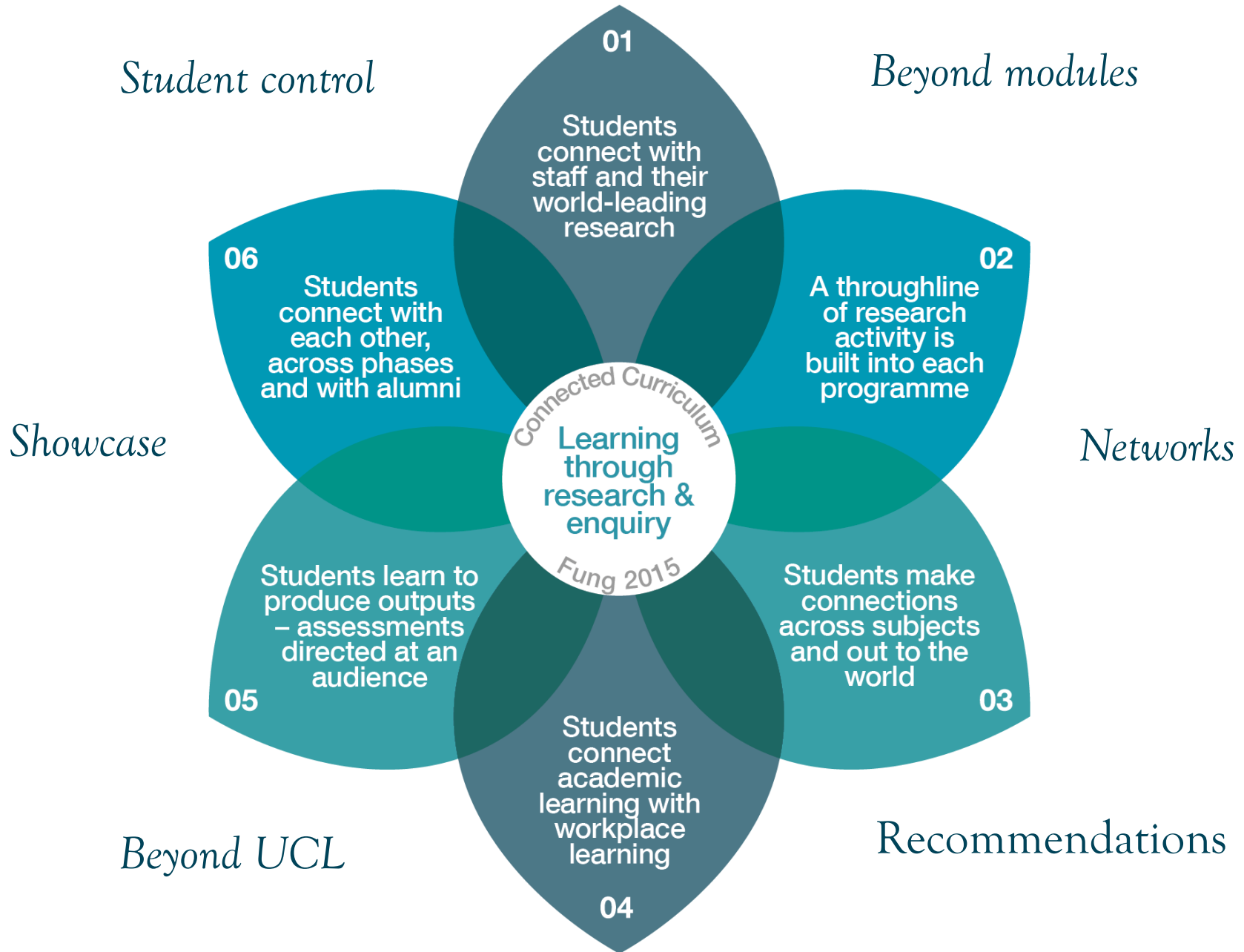


Starting a Conversation with Technology: “UCL Together”



Eileen Kennedy & Steve Rowett, Digital Education







CLE

A connected learning environment

Limitations of the traditional LMS

“Typical online learning delivered within an LMS requires fewer learner-centered skills”

(Tu et al. 2012)

“...creates constraints on learning environments and learning continuity (Mott & Wiley, 2009) promotes a culture of dependency rather than autonomy for students (Powell, 2008), static resources, de- contextualized tasks (Harrington et al., 2005) and limits focusing on technology development”

Area	Indicator	Moodle	Mahara
Design	High usability	No	No
	High quality design, including opportunities for staff and students to create resources of high aesthetic quality	No	No
	Works on any device	Partly	No
Communication	Enable communication between:		
	- teachers and students,	Yes	Yes
	- researchers and students,	No	Yes
	- students and each other,	Yes	Yes
	- teachers, students and the outside world.	No	Partly
	Provide a means to <i>create</i> and share video and audio cheaply and easily	No	Partly
Enable adaptable filtering of relevant information	No	No	
Support discussion outside of forums (e.g. via social media and <u>webconferencing</u>)	No	No	
Integration	"Open and flexible", with "permeable" and "permissive" boundaries,	No	No
	Integrate technologies used by staff and students in their personal and professional settings	No	Partly
Student activity	Encourage students to take control and ownership of additional activities	No	Yes
	Support interactive learning and student creativity	Partly	Partly
	Provide simple mechanisms to create, manage and present outputs within and beyond the institution	No	No
	Provide analytics to flag up concerns, suggest navigation pathways, or optimise workflows	No	No
Support	Learning and teaching support	Yes	Yes
	Be supported by e-learning and learning design specialists		
	Be supported by providing students with subject-specific digital literacies	Yes	Yes

An academic social network for UCL

Marketing Communications students investigated user needs for an academic social network – working title “UCL Together”

Making connections across disciplines

Building communities

Recommendations – communities, people, content - serendipity

Motivations – community engagement rewards

Social media feel and ease of use

Equal status but stewardship needed

Rich media

Wisdom of the crowd

[Mentimeter.com](https://www.mentimeter.com)


[Results](#)



UCL Students

What do they need?

UCL Connected Learning Landscape

A circular window with a dark frame looks out onto a garden. The garden features several trees with green and yellow leaves, and a large, grey, abstract stone sculpture in the center. The scene is framed by a light-colored wall.

“widening and loosening of the boundaries of the conventional learning spaces of the university, and an increasing blending of learning activities with other aspects of living and working across multiple scales and types of space and locations in the city at large”

(Nordquist & Laing, 2015 p. 340)

- Hybrid physical and virtual learning experiences
- Campus a means to encourage interaction and build a knowledge community
- Creating spaces of convergence for planned and unplanned events and activities
- Nexus for activity

Learning in time-bounded events

“the time-bounded nature of an event encourages people to learn together.....encounters between amateurs and experts”

(Sharples et al. 2014, p. 8)

“Having such an event as a focus gives learners something concrete to work towards and to reflect upon afterwards, together with a sense of personal engagement and excitement”.

TV Channel - Latest



Help us write a constitution for the UK!

HAVE YOUR SAY
Share your views here

DECIDE THE FUTURE OF THE UK

#constitutionUK **CONSTITUTION UK**

Profile

Andrew Bulovsky
Andrew Bulovsky
London, United Kingdom

Joined on Jan 9, 2015

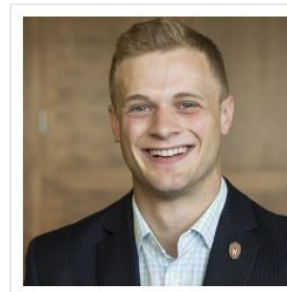
Bio MSc candidate in Comparative Politics at the LSE courtesy of a British Marshall Scholarship. Proud alum of the University of Wisconsin!

Age
18-29

Gender

REPUTATION RANKING

RANKING	POINTS
58	1153
STATS	
Ideas	1 Under review 0
Votes	0 Partially adopted 0
Comments	134 Adopted 0
Followers	9 Subscriptions 1



Block Follow VIEW FULL PROFILE >

IDEAS	VOTES	COMMENTS	PARTICIPANTS
107	1517	1603	181

SHARE THIS CHALLENGE



SUBSCRIBE

bill of rights like the US?

of these duties be enforced and how?
d you want to be protected?

Please remember to VOTE on the Ideas. Give them a thumbs up or down
Click on the SEE FULL BRIEF below for interesting and fun facts, videos and tweets to help you with your Ideas!

SEE FULL BRIEF

This Challenge	Overall
1 IanSmith1	925
2 John from Jersey	521
3 LibertyscottUK	395
4 clairefnn54	262



HACKING THE CONTENT 107 Ideas	REFINING THE CONTENT 69 Ideas	PREPARATION 69 Ideas	CONSTITUTIONAL CONVENTION 69 Ideas	OUR NEW CONSTITUTION 69 Ideas
---	---	--------------------------------	--	---

CURRENT PHASE
Our new Constitution

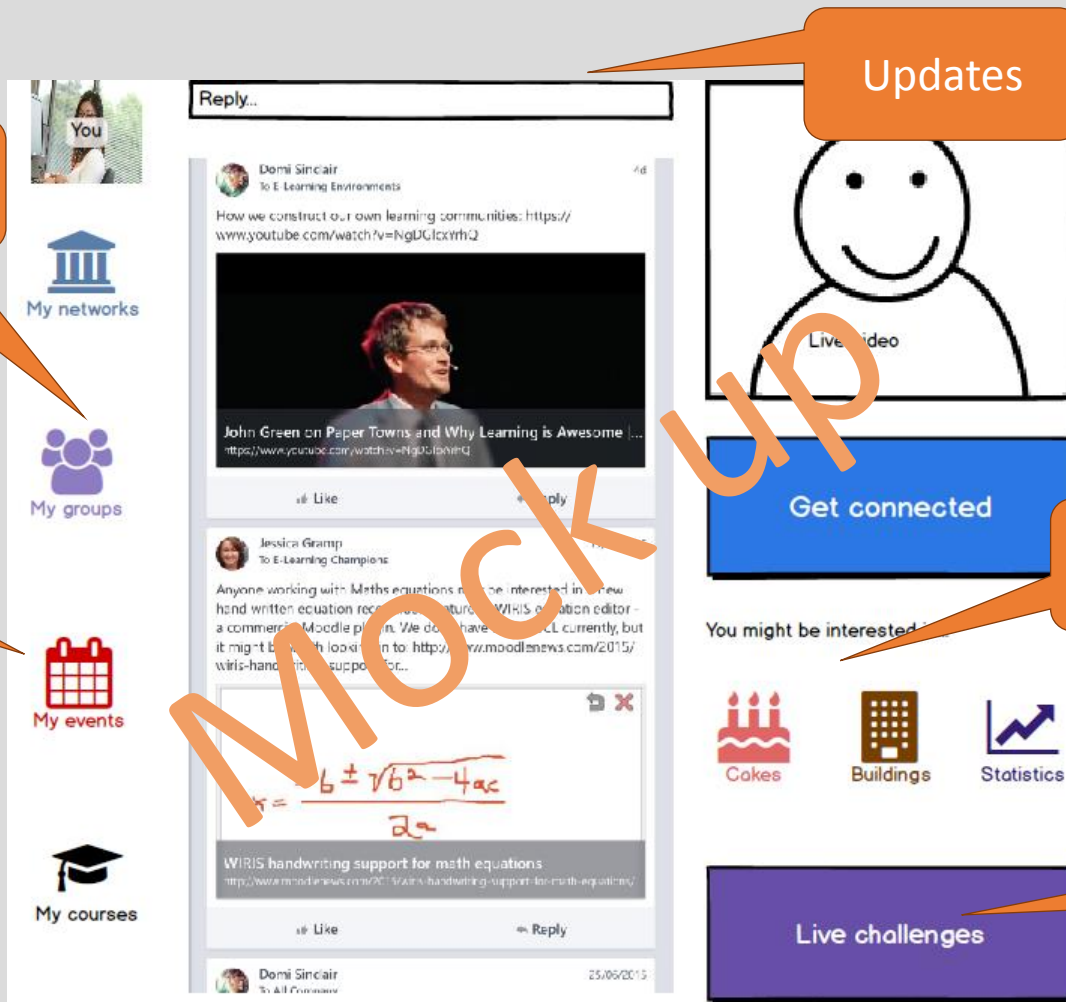
Updates

Communities

Events

Recommendations

Votes & Rewards



Reply..



Domí Sinclair
To E-Learning Environments

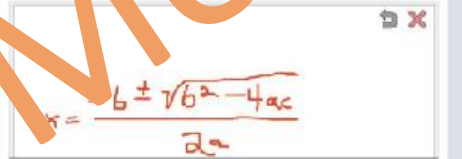
How we construct our own learning communities: <https://www.youtube.com/watch?v=NgDGLcxYrhQ>



John Green on Paper Towns and Why Learning is Awesome ...
<https://www.youtube.com/watch?v=NgDGLcxYrhQ>

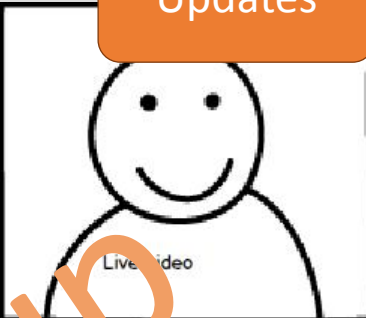
Jessica Gramp
To E-Learning Champions

Anyone working with Maths equations might be interested in a new hand written equation recognition feature. WIRIS equation editor - a commercial Moodle plugin. We do not have a LMS currently, but it might be worth looking in to: <http://www.moodlenews.com/2015/wiris-handwritten-support/>



WIRIS handwriting support for math equations
<http://www.moodlenews.com/2015/wiris-handwritten-support-for-math-equations/>

Domí Sinclair
To All Environments



Get connected

You might be interested in



Live challenges



Updates

Mentions

2 My Notifications

Action Required

Saved

My Page

My Network Contacts

Invitations

Following

Followers

Do You Know



Rachel Duffy

Invite

Profile Wikis

Communities Files

Blogs Bookmarks

Forums Activities



Rachel Duffy

rachel.duffy@portaldemo.co.uk

I am offline

Recent Updates

I'm going to a great lecture tonight, care to join?

Post | Clear



Eileen Kennedy updated the World Bank Data Catalogue bookmark.

Global development indicators



Fiona Strawbridge created a blog entry named Oooh statistics in the Statistics Network blog.

Lies, damn lies...

edy added the Statistics Network community blog.

ft created the event Community welcome party.

h event we will have a talk from Professor Y who has been working with his students on Z.

Followed by drinks in the Cloisters.

We hope you can make it -please indicate your attendance for catering purposes.

Statistics Network



This Community

By Points

Overall Rank

30 | 180 | All



1. Eileen Kennedy

35 Points



2. Steve Rowett

15 Points



3. Fiona Strawbridge

2 Points

< Prev 1 Of 1 Next >

5 | 10 | 50 | 100

Last Updated: 15:04

Next Update: 23:50

Update Ranks Now | Stop Ranking

Upcoming Events

There are no upcoming events.

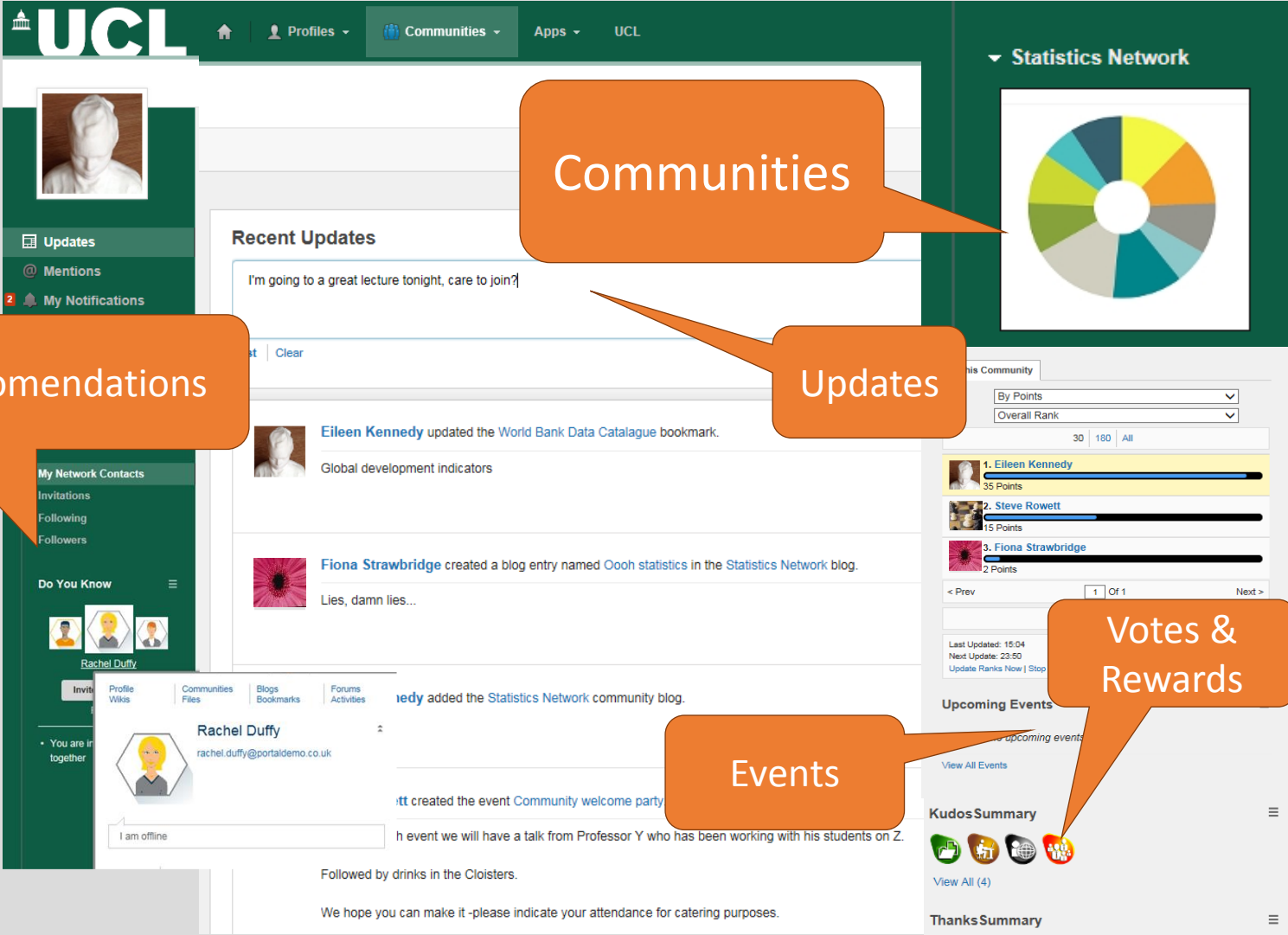
View All Events

Kudos Summary



View All (4)

Thanks Summary



Statistics Network



Communities

Recomendations

Updates

Votes & Rewards

Events

Profile picture of Rachel Duffy

Updates

Mentions

My Notifications

Recent Updates

I'm going to a great lecture tonight, care to join?



Eileen Kennedy updated the World Bank Data Catalogue bookmark.

Global development indicators



Fiona Strawbridge created a blog entry named Oooh statistics in the Statistics Network blog.

Lies, damn lies...

My Network Contacts

Invitations

Following

Followers

Do You Know

Rachel Duffy

Profile Wikis

Communities Files

Blogs Bookmarks

Forums Activities

edy added the Statistics Network community blog.



Rachel Duffy

rachel.duffy@portaldemo.co.uk

I am offline

tt created the event Community welcome party

h event we will have a talk from Professor Y who has been working with his students on Z.

Followed by drinks in the Cloisters.

We hope you can make it -please indicate your attendance for catering purposes.

is Community

By Points

Overall Rank

30 180 All



1. Eileen Kennedy

35 Points



2. Steve Rowett

15 Points



3. Fiona Strawbridge

2 Points

< Prev

1 Of 1

Next >

Last Updated: 15:04

Next Update: 23:50

Update Ranks Now | Stop

Upcoming Events

Upcoming events

View All Events

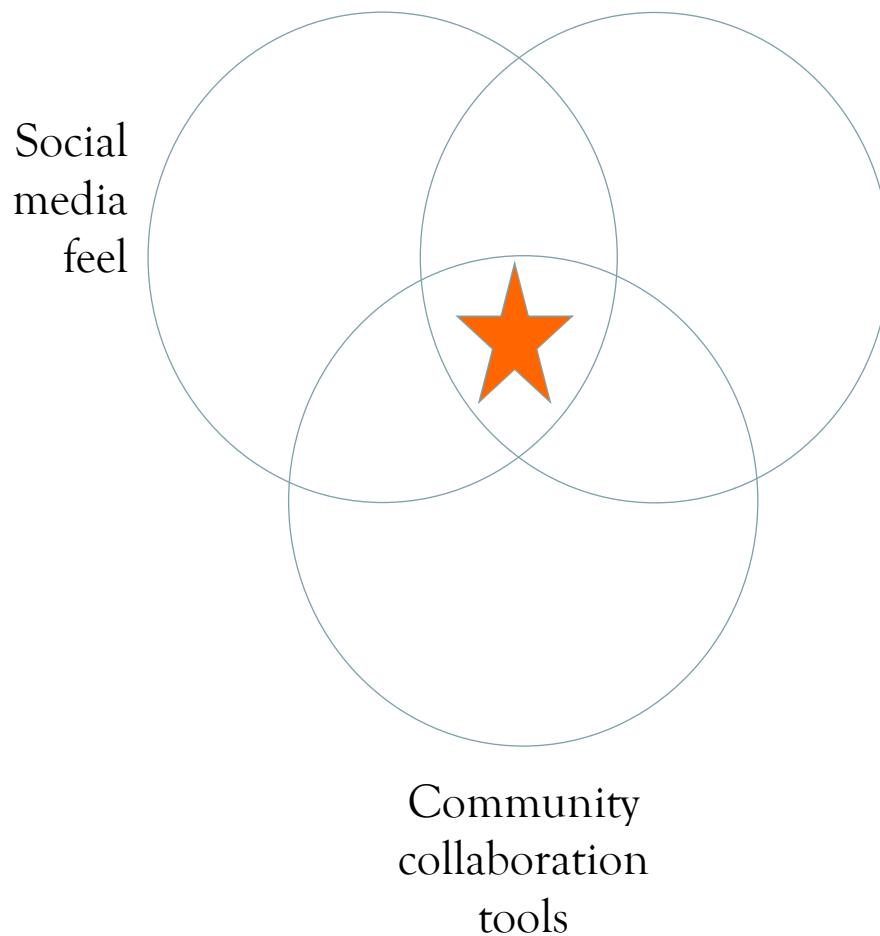
Kudos Summary



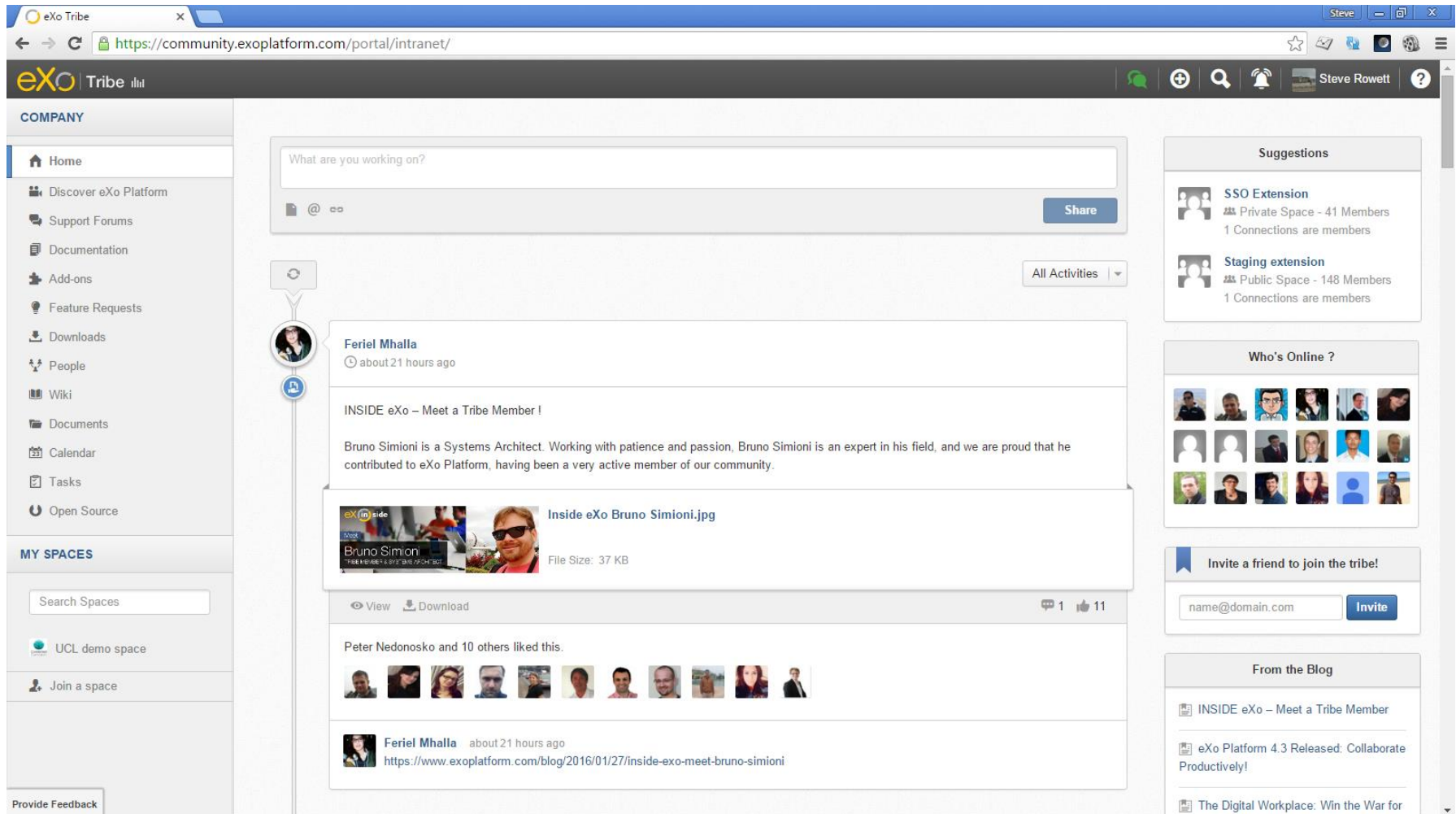
View All (4)

Thanks Summary

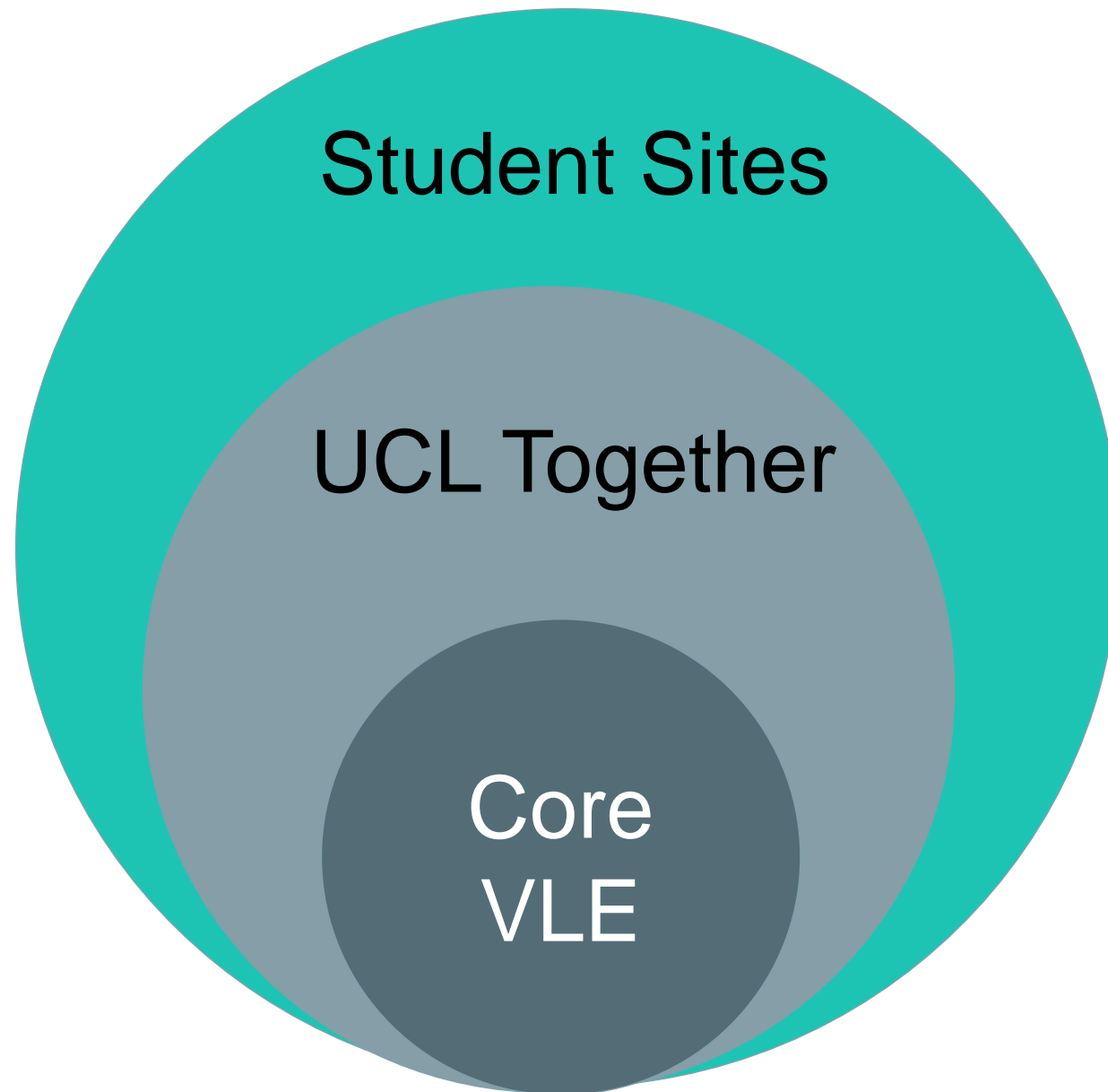
Characteristics of the right platform



eXo Platform



The screenshot displays the eXo Platform web interface. The browser address bar shows the URL <https://community.exoplatform.com/portal/intranet/>. The page features a navigation sidebar on the left with sections for 'COMPANY' (Home, Discover eXo Platform, Support Forums, Documentation, Add-ons, Feature Requests, Downloads, People, Wiki, Documents, Calendar, Tasks, Open Source) and 'MY SPACES' (Search Spaces, UCL demo space, Join a space). The main content area shows a post by Ferial Mhalla, titled 'INSIDE eXo – Meet a Tribe Member !', posted about 21 hours ago. The post text reads: 'Bruno Simioni is a Systems Architect. Working with patience and passion, Bruno Simioni is an expert in his field, and we are proud that he contributed to eXo Platform, having been a very active member of our community.' Below the text is an image titled 'Inside eXo Bruno Simioni.jpg' with a file size of 37 KB. The post has received 1 comment and 11 likes, with a list of users who liked it. A link to the blog post is provided: <https://www.exoplatform.com/blog/2016/01/27/inside-exo-meet-bruno-simioni>. The right sidebar contains sections for 'Suggestions' (SSO Extension, Staging extension), 'Who's Online ?' (a grid of user avatars), 'Invite a friend to join the tribe!' (with an input field and 'Invite' button), and 'From the Blog' (listing the same two blog posts as the main content area).



“UCL Together”

Timescale:

January: Prior Information
Notice & Request for
Information

April: Tender announced

July: Implementation

Towards a *Connected Learning Landscape* for
UCL – demonstrating process of education

Embedded in UCL’s approach to research-
based education

Sustaining active communities – research;
SIGs; modules & programmes; student-only

Providing networked induction events

Supporting Core course

Creating and maintaining relationships with
alumni & prospective students

Connecting with harder-to-reach students

[Mentimeter.com](https://www.mentimeter.com)

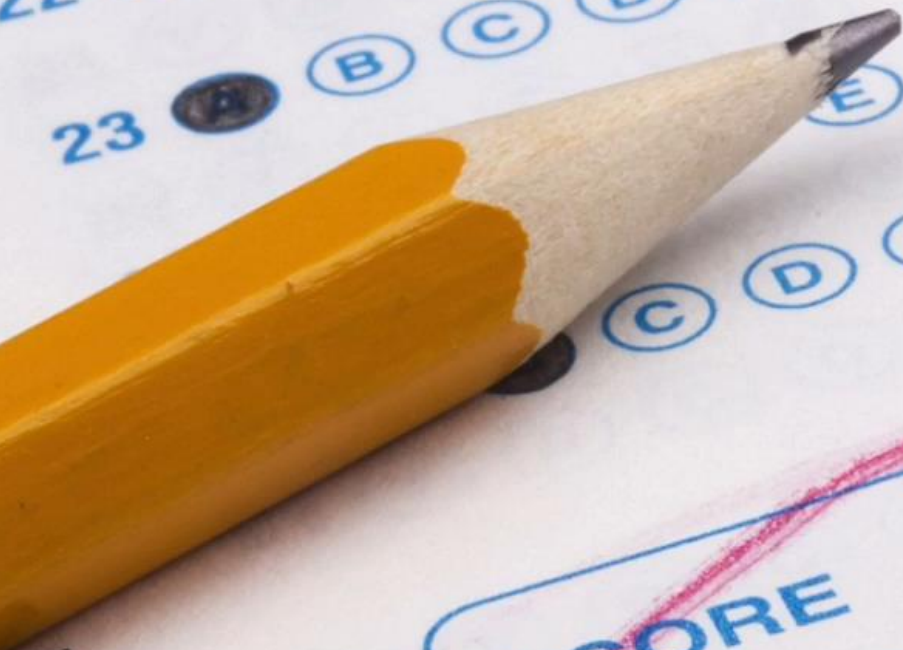
<https://www.mentimeter.com/app>

What conversation would you start?

- Have a chat with the person next to you – what would you be likely to use an academic social network?
- Does an academic social network answer a need you have as a UCL student?

22 (A) (B) (C) (D) (E)
23 (A) (B) (C) (D) (E)

48 (A) (B) (C) (D)
49 (A) (B) (C) (D)
50 (A) (B) (C) (D)



SCORE		# CORRECT
RESCORE		% CORRECT
ROSTER NUMBER	A +	# CORRECT
		% CORRECT
		SCORE
		RE
		SHE